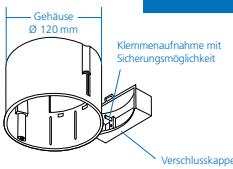


## Montageanleitung für

### Paneel- und Kassetten-Decken

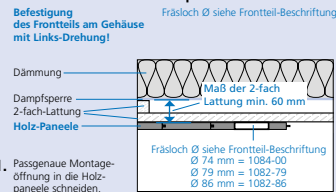
- max. Einbautiefe der Leuchte NV 65 mm / HV 70 mm
- max. Lampenleistung NV- und HV-Lampen 35 W mit ALU-Reflektor (NV-Lampen mit Sockel GU10)
- Gehäuse darf nicht von Isoliermaterial umhüllt eingebaut werden
- Nicht geeignet für den Einsatz von Kaltlichtlampen (Cool Beam)
- Bei NV-Beleuchtung Verwendung von elektronischen Sicherheitstransformatoren max. Maße: 109 x 53 x 33 mm 123 x 37 x 26 mm
- Im Gehäuse wärmebeständige Leitungen (N2 GMH 2G) und temperaturbeständige Klammern (z.B.T100) verwenden



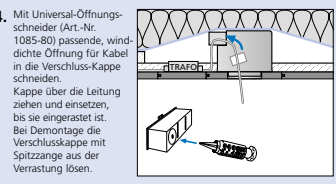
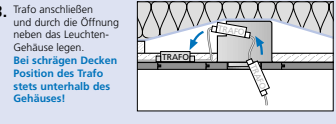
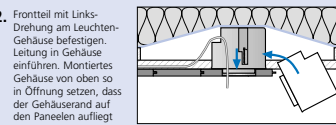
### ThermoX

### Rückseitiger Einbau

Der Einbau erfolgt während Erstellung der Decke von oben.

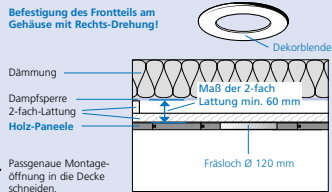


1. Passgenaue Montageöffnung in die Holzpaneele schneiden.

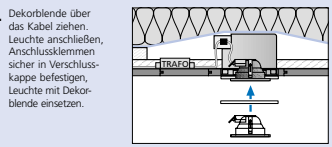
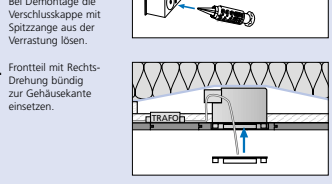
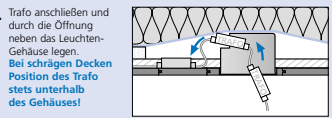
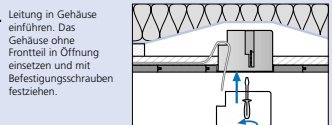


### Frontseitiger-Einbau mit Dekorblende

Der Einbau erfolgt nach Erstellung der Decke von unten.



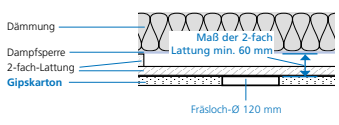
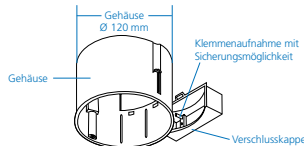
1. Passgenaue Montageöffnung in die Decke schneiden.



## Montageanleitung für frontseitigen Einbau in

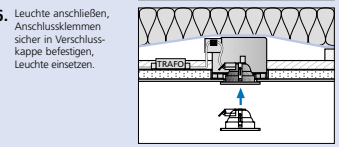
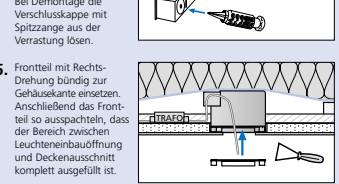
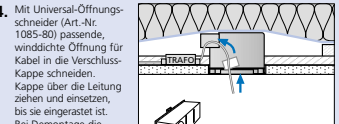
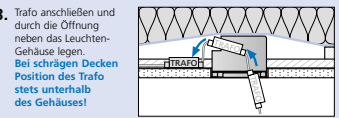
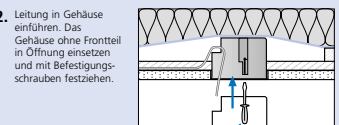
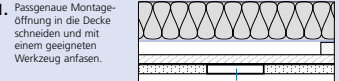
### Gipskarton-Decken

- max. Einbautiefe der Leuchte NV 65 mm / HV 70 mm
- max. Lampenleistung NV- und HV-Lampen 35 W mit ALU-Reflektor (HV-Lampen mit Sockel GU10)
- Gehäuse darf nicht von Isoliermaterial umhüllt eingebaut werden
- Fräslöch Ø 120 mm durch Variocut Art-Nr. 1089-00 Endstellung oder Bi-Metall Fräser Art.-Nr. 1082-20
- Nicht geeignet für den Einsatz von Kaltlichtlampen (Cool Beam)
- Bei NV-Beleuchtung Verwendung von elektronischen Sicherheitstransformatoren max. Maße: 109 x 53 x 33 mm 123 x 37 x 26 mm
- Im Gehäuse wärmebeständige Leitungen (N2 GMH 2G) und temperaturbeständige Klammern (z.B.T100) verwenden



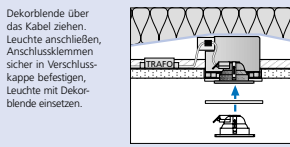
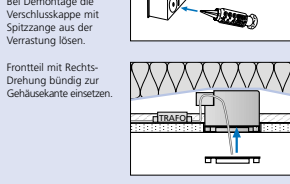
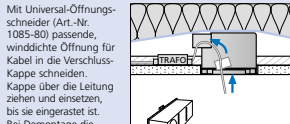
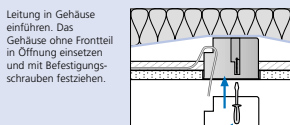
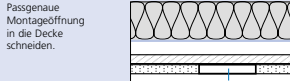
### Mit Spachtelvorgang

Die Einbauöffnung wird bis auf die Lampen-Öffnung verspachtelt.



### Mit Dekorblende

Die Dekorblende deckt die komplette Einbauöffnung ab.



**SICHERHEITSHINWEIS:** Es dürfen nur die angegebenen Leuchtmittel eingesetzt werden, der Errichter der Anlage ist verpflichtet, den Anwender davon in Kenntnis zu setzen!  
**! Max. Lampenleistung 35 W • Nicht geeignet für Kaltlichtlampen (Cool Beam) !**

### KAISER-Werkzeuge:

- Abmattelange AMZ 2 Art.-Nr. 1190-02
- Universal-Öffnungsschneider Art.-Nr. 1085-80
- Bi-Metall-Fräser Art.-Nr. 1084-00 Art.-Nr. 1082...
- VARIOCUT Universal-Lochscheider Art.-Nr. 1089-00

Für den Betriebsanbau entsprechenden Einbau von ThermoX und die Auswahl geeigneter Betriebsmittel, wie Leuchten, Transformatoren, deren Werkstoffe und den sicherheitstechnisch sachgemäßen Einbau der Bauteile

KAISER GmbH & Co. KG  
 Ramsloh 4 · D-58579 Schalksmühle  
 Tel. +49(0)2355.809.0 · Fax +49(0)2355.809.21  
 www.kaiser-elektro.de · info@kaiser-elektro.de



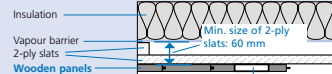
## Assembled ceiling and coffered ceiling

- max. mounting depth for LV-lights 65 mm / HV-lights 70 mm
- max. lamp wattage for LV- and HV-lights 35 W with aluminium reflector (HV-lights with base GU 10)
- The casing must not be mounted with a covering of insulating material
- Not compatible with the use of cold light lamps (Cool Beam)
- When using low voltage lighting, use electronic safety transformers, max. dimensions: 109 x 53 x 33 mm 123 x 37 x 26 mm
- Use heat-resistant cables (N2 GMH 2G) and temperature-resistant terminals (e.g. T100) in the casing

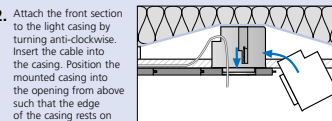
### Back mounting

Fitting is carried out from above as the ceiling is formed.

Attachment of the front section to the casing is anti-clockwise!



1. Cut a mounting hole in the wooden panels to enable an exact fit.



2. Attach the front section to the light casing by turning anti-clockwise. Insert the cable into the casing. Position the mounted casing into the opening from above such that the edge of the casing rests on the panels and the front section sits in the opening.

2a. Fastening screw or nail to attach the front section to the panels.  
2b. Fastening screw or nail to attach the front section to the coffered ceiling in 2 fixing domes.

3. Connect the transformer and put it through the opening next to the light casing. For sloped ceilings, always position the transformer underneath the casing!

4. Using a universal opening cutter (item no. 1085-80), cut an appropriate-sized windproof hole for the cable in the sealing cap. Pull the cap over the cable and insert until it engages. When removing the sealing cap, release from the catch with sharp-nose pliers.

5. Position the front section (clockwise) such that it is flush against the edge of the casing.

6. Draw the decorative surround over the cable. Connect the lamp, securely fasten the connection terminals in the sealing cover and insert the lamp and decorative surround.

**SAFETY NOTE:**  
The person installing the system must ensure that the user is aware of the fact that only the appropriate lights can be used!

**! Max. lamp wattage 35 W • Not compatible with cold light lamps (Cool Beam) !**

### KAISER-Tools:

Stripping tongs AMZ 2 Art.-Nr. 1190-02

Universal opening cutter Art.-Nr. 1085-80

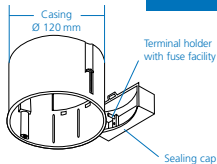
Bi-Metal-Cutter Art.-Nr. 1084-00



VARIOIOUT Universal hole cutter Art.-Nr. 1089-00



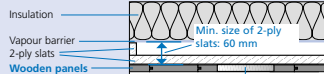
## ThermoX



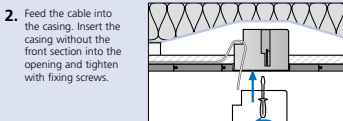
### Front fitting with decorative surround

Fitting is carried out from below after the ceiling is formed.

Attachment of front section to the casing is clockwise!



1. Cut a mounting hole in the wooden panels to enable an exact fit.



2. Feed the cable into the casing. Insert the casing without the front section into the opening and tighten with fixing screws.

3. Connect the transformer and put it through the opening next to the light casing. For sloped ceilings, always position the transformer underneath the casing!

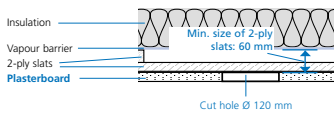
4. Using a universal opening cutter (item no. 1085-80), cut an appropriate-sized windproof hole for the cable in the sealing cap. Pull the cap over the cable and insert until it engages. When removing the sealing cap, release from the catch with sharp-nose pliers.

5. Position the front section (clockwise) such that it is flush against the edge of the casing.

6. Draw the decorative surround over the cable. Connect the lamp, securely fasten the connection terminals in the sealing cover and insert the lamp and decorative surround.

## Plasterboard ceiling chipboard, MDF, plaster fibre board etc.

- max. mounting depth for LV-lights 65 mm / HV-lights 70 mm
- max. lamp wattage for LV- and HV-lights 35 W with aluminium reflector (HV-lights with base GU 10)
- The casing must not be mounted with a covering of insulating material
- Cut Ø 120 mm hole using Variocut (item no. 1089-00) Final position or bi-metal cutter (item no. 1082-20)
- Not compatible with the use of cold light lamps (Cool Beam)
- When using low voltage lighting, use electronic safety transformers, max. dimensions: 109 x 53 x 33 mm 123 x 37 x 26 mm
- Use heat-resistant cables (N2 GMH 2G) and temperature-resistant terminals (e.g. T100) in the casing



### With filling work

The fitting hole is treated with filler up to the lamp opening.

1. Cut a mounting hole in the ceiling to enable an exact fit and chamfer using an appropriate tool.

2. Feed the cable into the casing. Insert the casing without the front section into the opening and tighten with fixing screws.

3. Connect the transformer and put it through the opening next to the light casing. For sloped ceilings, always position the transformer underneath the casing!

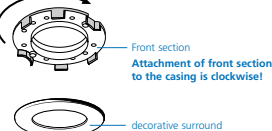
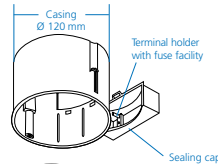
4. Using a universal opening cutter (item no. 1085-80), cut an appropriate-sized windproof hole for the cable in the sealing cap. Pull the cap over the cable and insert until it engages. When removing the sealing cap, release from the catch with sharp-nose pliers.

5. Position the front section (clockwise) such that it is flush against the edge of the casing. Then level out the front section such that the area between the light mounting opening and the ceiling section is completely filled.

6. Connect the light, attach connecting terminals securely in sealing cap and insert light.

The person installing the system is responsible for ensuring that the ThermoX is installed according to the operating instructions and for selecting suitable special components such as lights, transformers and their materi-

KAISER GmbH & Co. KG  
Ramsloh 4 · D-58579 Schalksmühle  
Tel. +49(0)2355.809.0 · Fax +49(0)2355.809.21  
www.kaiser-elektro.de · info@kaiser-elektro.de



### With decorative surround

The decorative surround covers the entire fitting hole.

1. Cut a mounting hole in the ceiling to enable an exact fit.

2. Feed the cable into the casing. Insert the casing without the front section into the opening and tighten with fixing screws.

3. Connect the transformer and put it through the opening next to the light casing. For sloped ceilings, always position the transformer underneath the casing!

4. Using a universal opening cutter (item no. 1085-80), cut an appropriate-sized windproof hole for the cable in the sealing cap. Pull the cap over the cable and insert until it engages. When removing the sealing cap, release from the catch with sharp-nose pliers.

5. Position the front section (clockwise) such that it is flush against the edge of the casing.

6. Draw the decorative surround over the cable. Connect the lamp, securely fasten the connection terminals in the sealing cover and insert the lamp and decorative surround.

als as well as for the correct safety technical installation of the components, in accordance with the light and installation specifications. The right to make alterations to the materials, design and component range is reserved.